

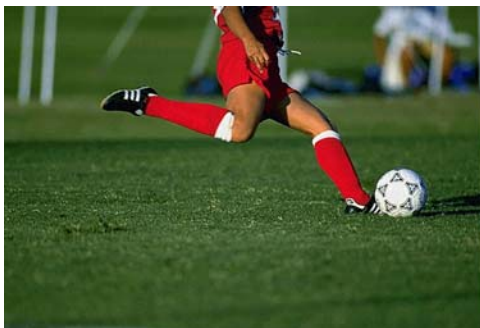
The HotShot line of high-speed digital video cameras from Motion Imaging Corporation provides the user with affordably priced high-speed video featuring optimal light sensitivity and long record times... all in one extremely compact package!

MIC's HotShot **1024 cc** is designed to be an easy-to-use, high-speed video solution for research, test and production customers. The HotShot **1024 cc** camera and recording system provides the user with an affordably priced versatile and reliable high-speed video system for a variety of applications including: biomechanics, research, test, design, production, packaging and many more!

The HotShot **1024 cc** records brilliant color images or crisp monochrome images at resolutions up to 1024 x 1024 pixels @ 300 fps. and frame rates up to 10,000 fps at lower resolutions.



- Resolution 1024 x 768 @ 500 fps
- Resolution 800 x 600 @ 1,000 fps
- Compact Camera Body < 2.5 lbs
- Superior light sensitivity
- Gigabit Ethernet Interface
- Available in Monochrome or Color
- Up to 16 GB Internal Memory
- Intuitive Capture and Control Software
- Analysis Software for 2D Tracking of Velocity, Acceleration & Displacement



HotShot 1024 cc Features and Specifications

Resolution	1024 x 1024 Pixels
Frame Rate @ Maximum Resolution	300 fps
Onboard Memory	1GB / 2GB / 4GB / 8GB / 16GB
Recording Time	Up to 60 seconds
Image Sensor	Progressive Scan CMOS
Exposure Time	2 μ s—1/Framerate
Active Area	14.3 mm x 14.3 mm
Sensor Format	1.1"
Sensor Diagonal Dimension	20.2 mm
Pixel Size	14 μ m x 14 μ m
Storage Bit Depth	8 Bit
Sensor Bit Depth	10 Bit
Sensitivity	ISO 4000 Mono, ISO 1000 Color
Shutter	Global electronic, >2 μ s exposure time
Trigger Signal	TTL, switch, open collector, rising or falling edge, on image content variation
Synchronization	Internal, external
Interface	Gigabit Ethernet
Video Output	VGA
Power	12 VDC / 12 W
Lens Mount	C-Mount, F-Mount with Adapter or optional AFG mount
Weight	< 2.5 lbs.
Operating Temperature	32—104 degrees F
Humidity	< 80% relative, non-condensed
Dimensions	145mm x 95mm x 78.5mm
Conformity	CE, RoHS



Motion Imaging Corporation

15 McCoy Place
 Simi Valley, California 93065
 Tel: 805-577-0463
 Fax: 805-584-3642
 Email: Sales@mi-as.com
 Website: www.mi-as.com