



HotShot Mega X3 cc

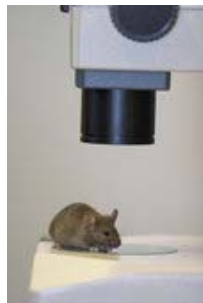
The HotShot line of high-speed digital video cameras from Motion Imaging Corporation provides the user with affordably priced high-speed video featuring high frame rates, high resolutions and long record times... all in one extremely compact package!

MIC's HotShot **Mega X3 cc** is designed to be an easy-to-use, high-speed video solution for research, test and production customers. The HotShot **Mega X3 cc** camera and recording system provides the user with an affordably priced versatile and reliable high-speed video system for a variety of applications including: biomechanics, research, test, design, production, packaging and many more!

The HotShot **Mega X3 cc** records brilliant color images or crisp monochrome images at resolutions up to 1280 x 1024 pixels standard at 1000 frame per second - with frame rates up to 20,000 fps at reduced resolutions and recording times up to two (2) minutes!



- **1000 fps at full resolution**
- **1280 x 720 resolution @ 1500 fps**
- **Compact Camera Body < 2.5 lbs**
- **Gigabit Ethernet Interface**
- **Available in Monochrome or Color**
- **Up to 16 GB Internal Memory for longer record times**
- **Intuitive Capture and Control Software**
- **Analysis Software for 2D Tracking of Velocity, Acceleration & Displacement**



HotShot Mega X3 cc Features and Specifications

Resolution	1280 x 1024 Pixels
Frame Rate @ Maximum Resolution	1000 fps
Onboard Memory	2GB / 4GB / 8GB / 16GB
Maximum frame rate	20,000
Image Sensor	Progressive Scan CMOS .8"
Exposure Time	2 μ s—1/Framerate
Active Area	10.24mm x 8.19mm
Sensor Diagonal Dimension	13.11 mm
Pixel Size	8 μ m
Storage Bit Depth	8 Bit
Sensor Bit Depth	8 Bit
Sensitivity	ISO 2000 Mono, ISO 500 Color
Shutter	Global electronic, 2 μ s
Trigger Signal	TTL, switch, open collector, rising or falling edge, on image content variation
Synchronization	Internal, external
Interface	Gigabit Ethernet
Video Output	VGA
Power	12 VDC / 12 W
Lens Mount	C-Mount, F-Mount with Adapter, AFG Mount available
Weight	< 2.5 lbs.
Operating Temperature	32—104 degrees F
Humidity	< 80% relative, non-condensed
Dimensions	145mm x 95mm x 78.5mm
Conformity	CE, RoHS
Optional	LabView Driver



Motion Imaging Corporation
 15 McCoy Place
 Simi Valley, California 93065
 Tel: 805-577-0463
 Fax: 805-584-3642
 Email: Sales@mi-as.com
 Website: www.mi-as.com